

# BRANFORD RTM

JANUARY 10, 2024



BRANFORD COASTAL VULNERABILITY



Branford has 20 miles of coastline over 6-mile span  
and 15 significant coastal marshlands

LISICOS -- The Long Island Sound  
Integrated Coastal Observing System

## BRANFORD COASTAL VULNERABILITY



If a **category 3 storm** hit our coastline at high tide in **2050** our coastline **flooding** might look like this!

LISICOS -- The Long Island Sound Integrated Coastal Observing System

BRANFORD COASTAL VULNERABILITY

# NEAR TERM PREDICTIONS:



Governor's Council  
on Climate Change

Phase 1 Report: Near-Term Actions January 2021

Mean sea level in Long Island Sound could be up to **20 inches** above the National Tidal Datum **by 2050.**

There is **high confidence** in projected changes through the mid-century.

Sea level rise will continue after 2050. Recent simulations indicate that if CO<sub>2</sub> emissions are not reduced soon the mean sea level **could be over 6 feet higher by 2100.**

Global Warming is bringing a significant increase in the **frequency** of 100-year and 500-year weather events

Climate change will significantly impact the frequency of flooding

- **Coastal flood risk may increase by a factor of 5 to 10** -

Superstorm Sandy high water levels will be expected every 5 to 10 years.



Monthly **Spring** Tide  
11/26/2018

Monthly **Spring** Tide  
With 20" of sea level rise



Town of Branford Coastal Resilience Plan

June 2016



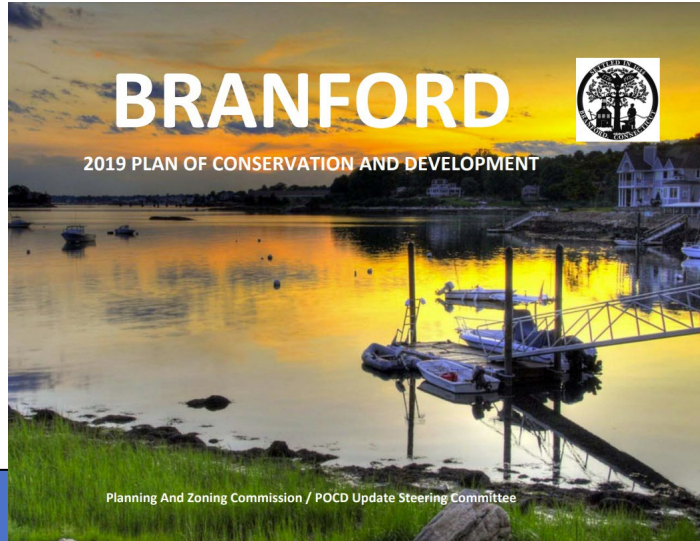
Prepared by:  
Milone & MacBroom, Inc.  
99 Realty Drive  
Cheshire, Connecticut 06410  
MILONE & MACBROOM

With assistance from:  
Dewberry  
59 Elm St #101  
New Haven, Connecticut 06510  
Dewberry

Under the direction of the  
Town of Branford

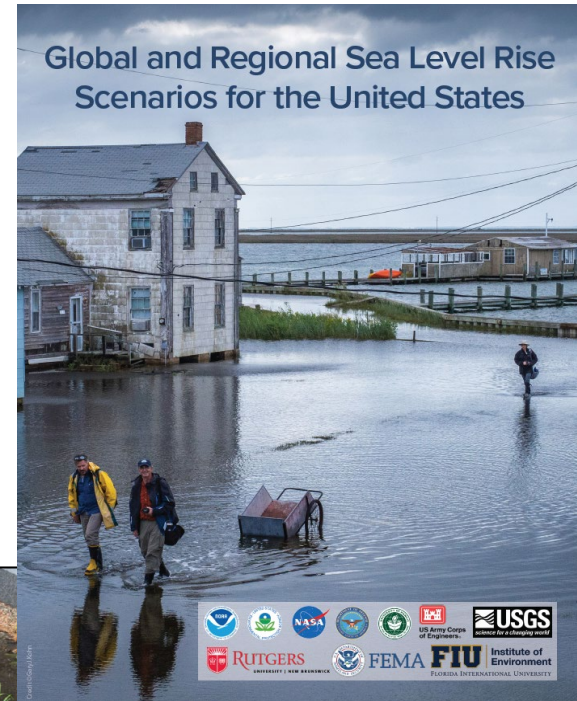


This plan was prepared under a Community Development Block Grant Disaster Recovery (CDBG-DR) grant awarded to the Town of Branford, Connecticut for coastal resilience planning in Branford, Madison, and Milford, Connecticut.



Planning And Zoning Commission / POCD Update Steering Committee

JUNE 2019



FEB 2022

JUNE 2016

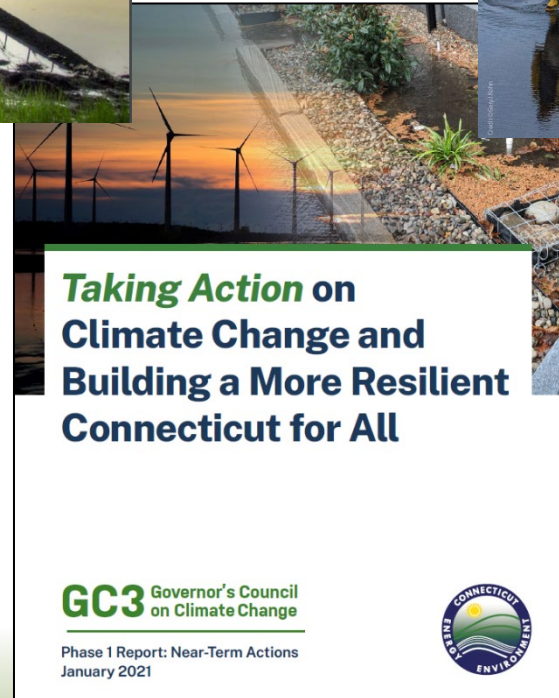
SOUTH CENTRAL REGION MULTI-JURISDICTION  
HAZARD MITIGATION PLAN  
UPDATE

May 14, 2018  
Addendum Included September 6, 2018

Prepared by:  
South Central Regional Council of Governments  
127 Washington Avenue, 4<sup>th</sup> Floor West  
North Haven, Connecticut 06473



MAY 2018



Taking Action on  
Climate Change and  
Building a More Resilient  
Connecticut for All

GC3 Governor's Council  
on Climate Change

Phase 1 Report: Near-Term Actions  
January 2021



JAN 2021

Available for download on  
the Branford Town Website

BRANFORD COASTAL VULNERABILITY

# Current CVWG / Branford Initiatives



- Wastewater Treatment Plant
- Road Flooding
- Ordinances and Regulations
- Community Presentations and neighborhood liaison groups
- CVWG page on the Town website as a resource
- CIRCA, DEEP, SCRCOG - tracking, resources, data, reports
- Coastal Resilience Fund & the role of the RTM



# Wastewater Treatment Plant

- Presentation to WPCA
- Recommendation to study “hardening” the plant and pump stations
- Recommendation for a phase 1 study RFP
- Currently tracking progress and completion of the phase 1 study
- Promoting next steps to be taken





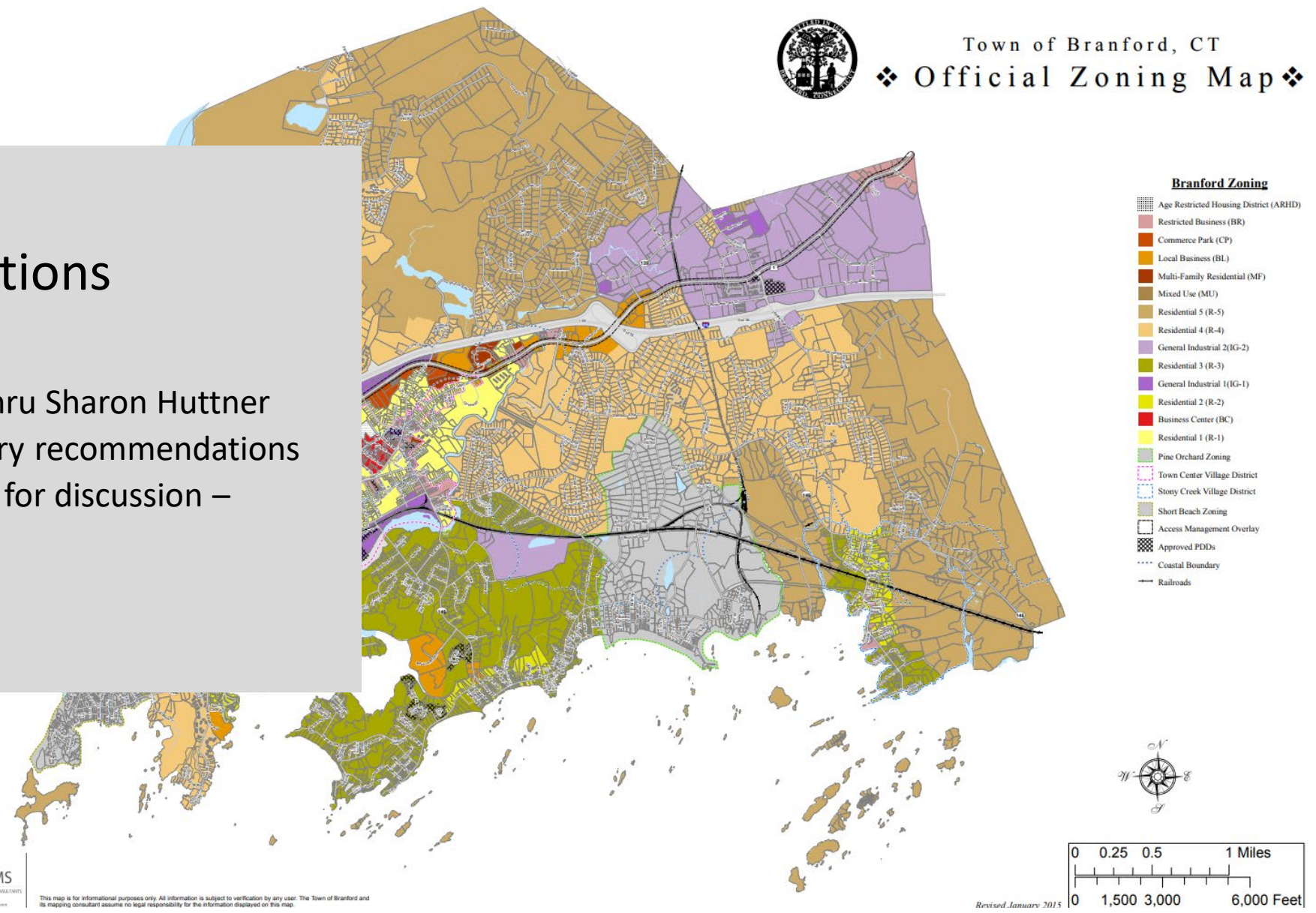
## Road Flooding

- Road flooding database and mapping
- Prioritizing the most vulnerable locations
- Elevating roadways, protecting roadways and alternative routes
- Understanding the issues with each type of response
- Using test locations to study various approaches and clarify the issues
- Consulting with John Lust re DEEP approval

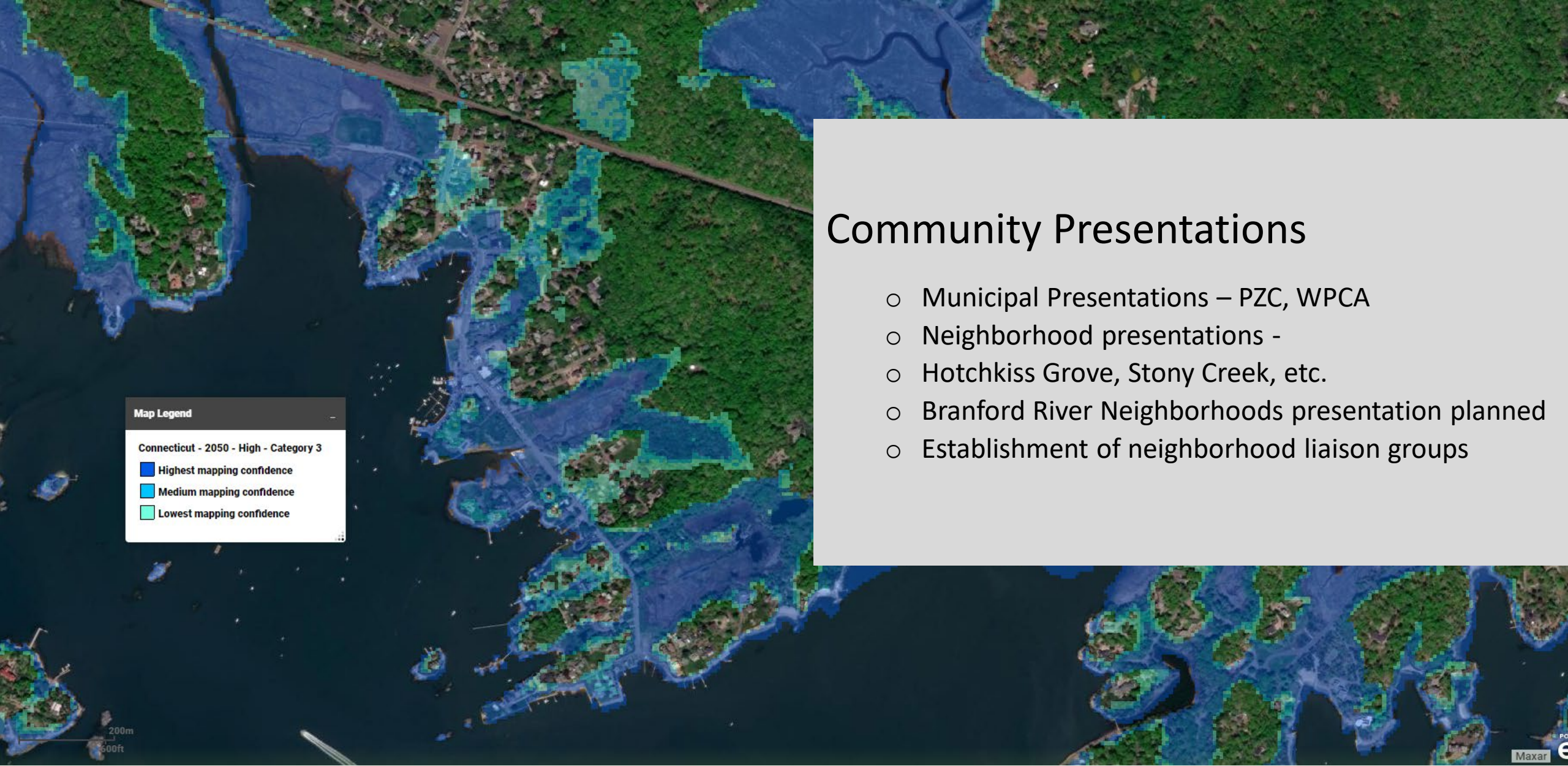


# Ordinances and Regulations

- Presentation to PZC
- Establishment of a liaison thru Sharon Huttner
- Researching CIRCA regulatory recommendations
- Drafting possible responses for discussion – regulations and ordinances



This map is for informational purposes only. All information is subject to verification by any user. The Town of Branford and its mapping consultant assume no legal responsibility for the information displayed on this map.



# Community Presentations

- Municipal Presentations – PZC, WPCA
- Neighborhood presentations -
- Hotchkiss Grove, Stony Creek, etc.
- Branford River Neighborhoods presentation planned
- Establishment of neighborhood liaison groups



Coastal Vulnerability ad hoc Working Group

## AD HOC WORKING GROUP

THE CREATION OF A COASTAL VULNERABILITY AD HOC WORKING GROUP AND DEVELOPMENT, TO WORK IN COORDINATION WITH TOWN TO THE ENVIRONMENTAL CHALLENGES FACING BRANFORD'S PROJECTS AND RECOMMENDATIONS FOR CHANGES IN BEHAVIOR AND CHANGES IN LAND USE.

Two of the most significant problems that society is facing. Sea level rise and severe storms are two aspects of climate change that will impact coastal neighborhoods and on the welfare of Branford as a whole. Coastal areas will be impacted - without distinction in terms of whether they are on the shoreline and inland. A coordinated response will be

The town will develop detailed long-term projections of the impacts on municipal infrastructure (town-owned roads and bridges, sewers, public utilities) and a plan to guide future land-use decisions in areas that are vulnerable to sea level rise and severe coastal storms. A list of civil engineering projects to potentially mitigate coastal vulnerability effects will need to be generated and managed.

**Branford's Coastal Resiliency Plan of 2016** -The first step in this process has been completed thru the CRP of 2016. This plan was prepared under a Community Development Block Grant Disaster Recovery (CDBG-DR) grant awarded to the Town of Branford for coastal resilience planning in conjunction with Madison, and Milford, Connecticut. The plan was prepared by



## SUSTAINABILITY AND COMPLIANCE OFFICE RESOURCES

-  Sustainability and Compliance Manager Tyler Bowne
-  (203)315-0637
-  1019 Main Street  
Branford, CT 06405
-  [Sustainability@branford-ct.gov](mailto:Sustainability@branford-ct.gov)

## RELATED LINKS

[Clean Energy ad hoc Committee](#)

# CVWG page on the Town website

- Access to key documents and reports
- Setting up a Q&A portal
- Access to information regarding FEMA



## CIRCA, DEEP, SCRCOG – resources

- CIRCA UCONN – Connecticut Institute for Resilience & Climate Adaptation
- SCRCOG – South Central Region Council of Governments
- DEEP – Ct Department of Energy and Environmental Protection

Information on coastal flooding and waves for Connecticut

**Overview**

Reports, presentations, posters, and outreach materials

**References**

Interactive map view technical tools

**Tools**

**Projects**

# CRF – COASTAL RESILIENCE FUND

**Branford's Coastal Resiliency Fund** - In February 2019 Finance Director Jim Finch and the First Selectman created the Branford Coastal Resiliency Fund pursuant to approval by the Board of Finance and RTM.

**Senate Bill 1062** - Current state law largely prohibited municipalities from investing in assets designed to achieve superior growth over longer periods of time. The Jim Finch worked State Senator Christine Cohen to draft and propose Senate Bill 1062: An Act Authorizing Municipal Climate Change and Coastal Resiliency Reserve Funds which was signed into law by Governor Ned Lamont in July 2019.

**Coastal Vulnerability Ad Hoc Working Group** - In December 2019 the Board of Selectmen approved the creation of a Coastal Vulnerability ad hoc Working Group, as recommended by the 2018 plan of conservation and development, to work in coordination with town staff to research and recommend proactive responses to the environmental challenges facing Branford's coastline utilizing both civil engineering mitigation projects and recommendations for changes in behavior that may require new or revised ordinances, regulations and changes in land use.

# THE ROLE OF THE RTM / RESILIENCY ACTIONS

- February 2019 – Initial allocation of \$1,000,000 to the CRF
- Annually - yearly budget allocations to the Coastal Resiliency Fund
- February 2020 - denied request to use CRF to purchase a residence for retreat
- October 2022 - funded Phase 1 Resiliency Study of the Treatment Plant thru CRF
- April 2023 - funded CIRCA study of the Meadow Street underpass flooding thru CRF



# COASTAL RESILIENCE FUND

## FUND CONTRIBUTIONS

FISCAL YEAR		CONTRIBUTION	CUMULATIVE	FUND BALANCE
2019	initial	\$1,000,000	\$1,000,000	\$1,002,107
2020	budgeted	\$300,000	\$1,300,000	\$1,317,727
2021	budgeted	\$306,000	\$1,606,000	\$1,624,767
2022	budgeted	\$306,000	\$1,912,000	\$1,783,487
2023	budgeted	\$306,000	\$2,218,000	\$2,097,792
2024	budgeted	\$310,000	\$2,528,000	
2025	anticipated	\$310,000	\$2,838,000	
2026	anticipated	\$310,000	\$3,148,000	
2027	anticipated	\$310,000	\$3,458,000	
2028	anticipated	\$310,000	\$3,768,000	

## FUND EXPENDITURES

2023	WWTP study	\$75,000
	Cattle Crossing Study	\$0

## FUND AUTHORIZATIONS

2023	WWTP study	\$75,000
2023	Cattle Crossing Study	\$100,000

# BRANFORD RTM

JANUARY 10, 2024

RTM representatives are welcome to join monthly meetings of the CVWG and ask questions

The CVWG will be posting more detailed presentations on Resiliency and make them available to the RTM

BRANFORD COASTAL VULNERABILITY