

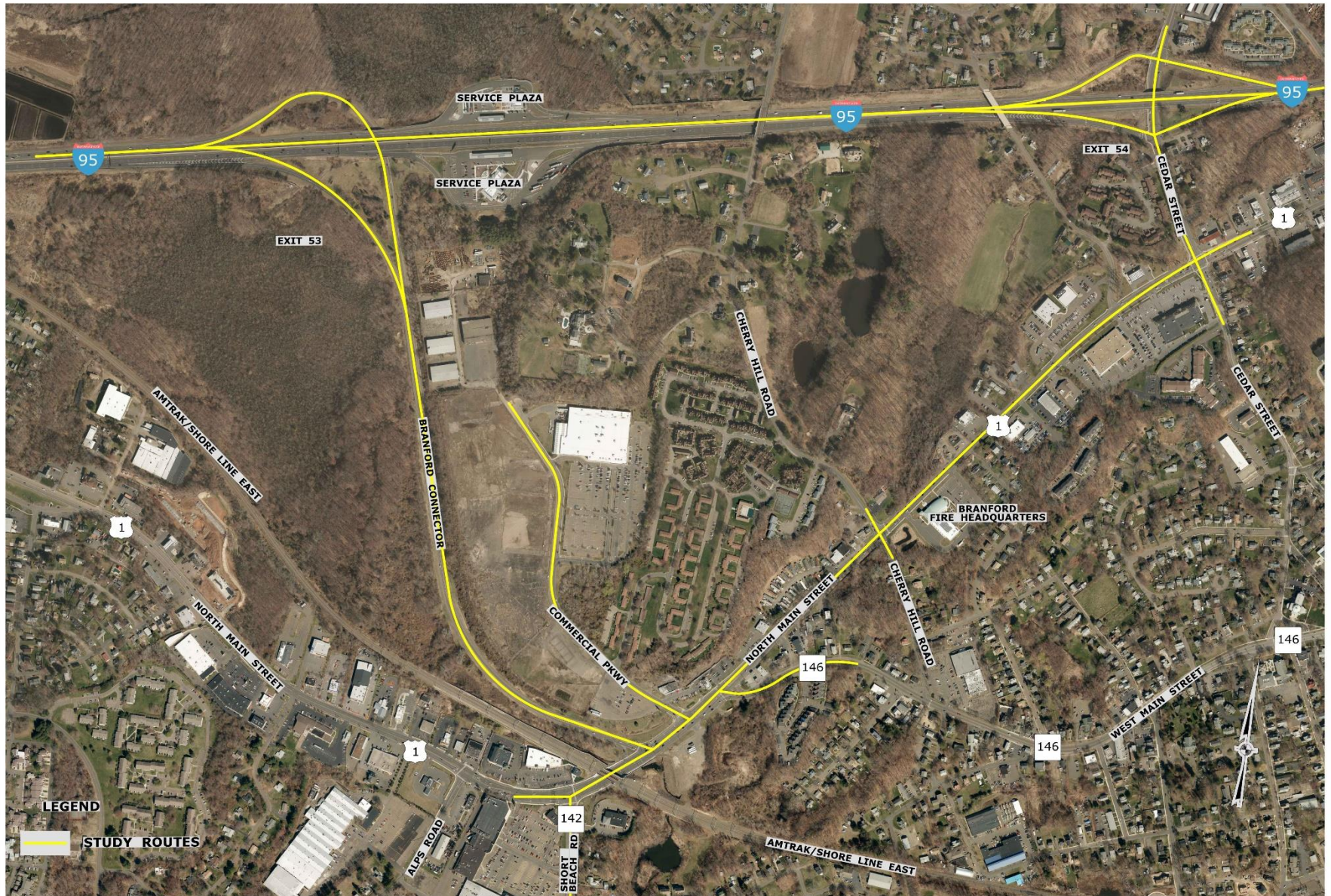


Branford Connector Corridor Study

Public Information Meeting
Town of Branford, CT
May 30, 2018



Project Limits



Purpose and Need

- Highway System Linkage
 - To provide missing connections from US Rte. 1/Branford Connector to I-95 NB and SB,
 - Maintaining highway access for all vehicle classes to and from the service plazas
 - Enhancing emergency access
- Highway Capacity
 - Enhance capacity at signalized intersections along US Rte. 1 so that they are able to meet projected traffic demand for all vehicle classes.
- Roadway Safety and Crash Reduction
 - Improve safety for all users along both US Rte. 1 and I-95 corridors
 - Reduce roadway hazards contributing to crash frequency and severity
- Promote Local Growth and Development Goals
 - Consistent with local, regional and statewide plans of conservation and development

Scope of Study

- Document existing traffic operating conditions in terms of capacity and safety; identify needs and deficiencies.
 - At intersections along US Route 1
 - I-95 mainline between Exits 53 & 54 and ramps
 - Along Cedar Street between Exit 54 Ramps and Route 1
- Project future No-Build traffic operating conditions.
- Identify possible economic development opportunities around the Commercial Parkway/Branford Connector area.
- Develop study alternatives
 - Provide seamless and efficient traffic flow to/from I-95 via Exit 53 & 54 and US Route 1 intersections
 - Preserve opportunities and access to future development of adjacent land parcels
- Identify opportunities for standalone projects
 - Federal/State grants
 - Public-private partnerships

Project History

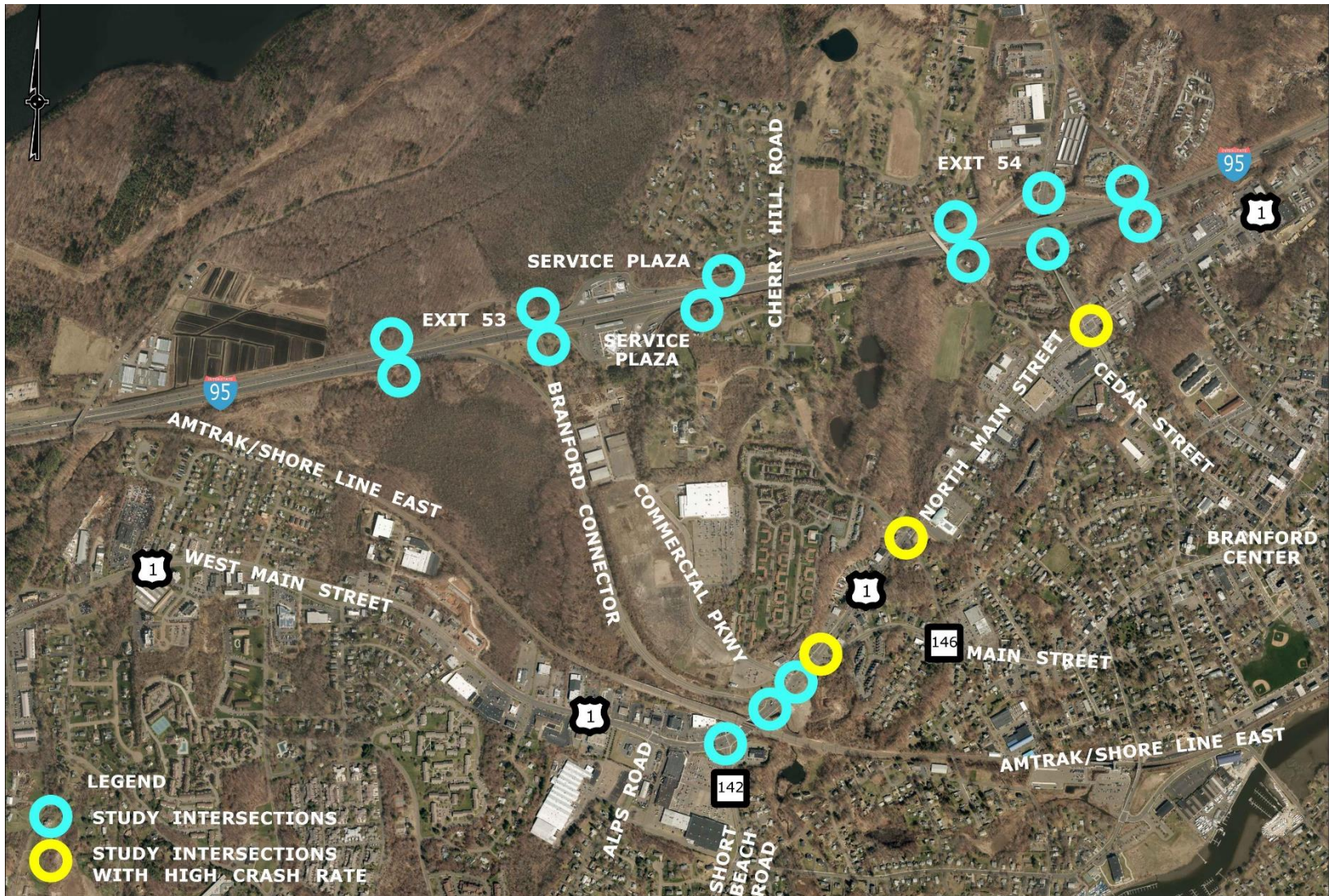
- 1997 Pretzel was removed along Route 1
 - OSTA determination for approval of Wal-Mart
- CTDOT Projects
 - Widening of Route 1 at Cherry Hill Road and Cedar Street
 - Widening of I-95 between East Haven and Interchange 54
 - Amtrak Overpass over Route 1
- TIGER Grant Application



Previous/Ongoing Studies and Information

- City wide traffic study by Earth Tech
- Town of Branford Plan of Conservation and Development
- Widening of I-95 from New Haven to Rhode Island State Line (Ongoing)

Study Intersections



Data Collected/Research Existing Info

- Manual turning movement traffic counts – AM, PM and Saturday at signalized intersections
- Continuous counts at rest area ramps, Exit 54 ramps
- CTDOT data on I-95 mainline and weaving segments
- Crash data
- Traffic signal plans
- Roadway inventory
- Town GIS/topo
- Limited Origin-Destination Study

No-Build 2037 Traffic Operations



Identified Existing Deficiencies

I-95

- Lack of full access at Exit 53.
- Emergency access to northbound service plaza.
- Short weave between Service Plaza on-ramp and Exit 54 off-ramp (northbound)

US Route 1

- Closely spaced intersections.
- High-crash Locations (also included in 2012-2014 SLOSSS):
 - @ Route 146 (#1206),
 - @ Cherry Hill Road (#1382),
 - @ Cedar Street (#81)
- Limited multi-modal facilities.

Alternate 1



Alternate 2



Alternate 3



Alternate Comparison

	No Build	Alternate #1	(Preferred) Alternate #2	Alternate #3
Highway System Linkage	X	✓	✓	✓+
Highway Capacity	X	✓-	✓	✓
Roadway Safety and Crash Reduction	X	✓	✓	✓
Promote Local Growth and Development Goals	X	✓-	✓+	✓-
ROW Impacts	✓+	X	✓	✓-
Environmental Impacts	✓+	X	✓-	✓-

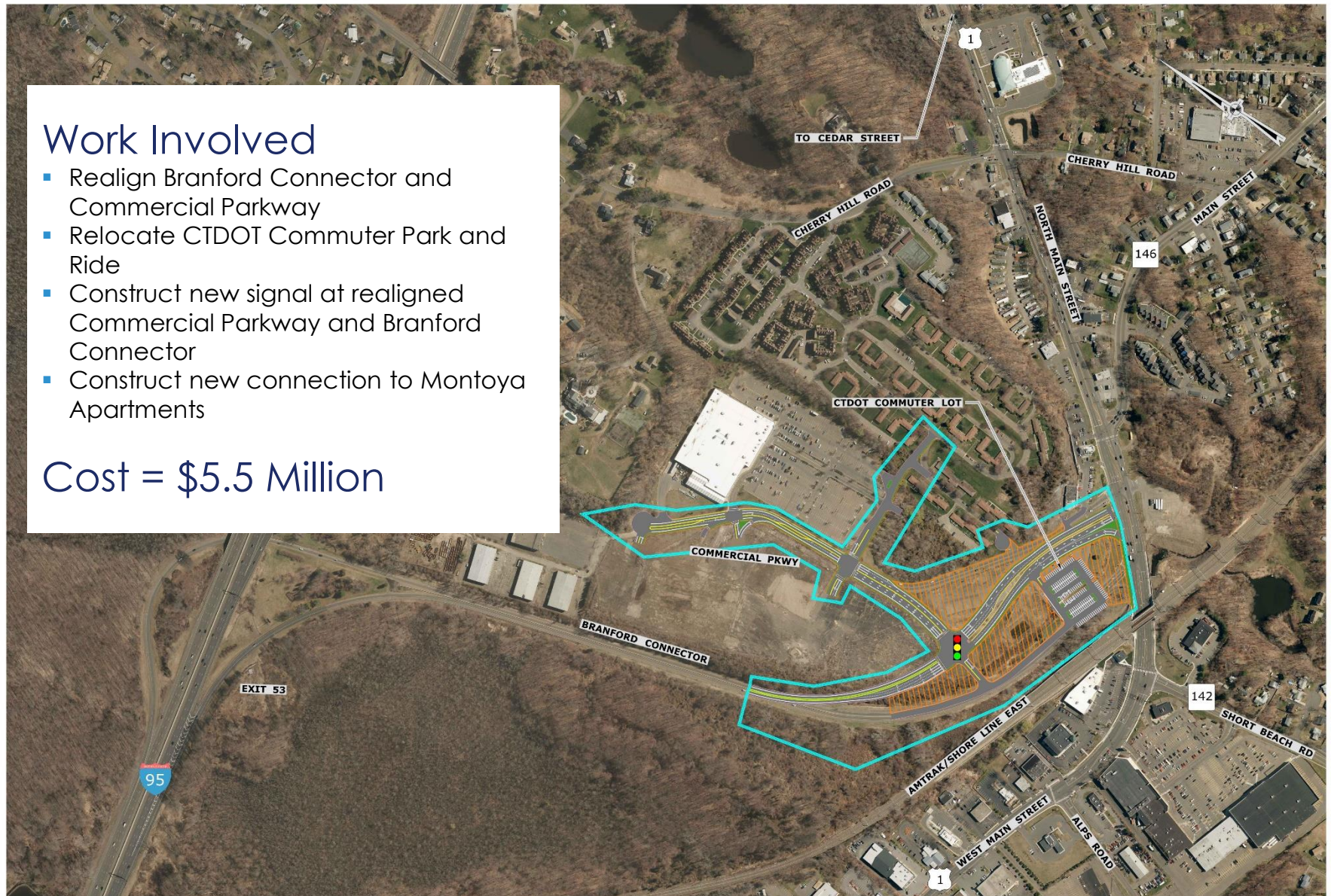
Potential Breakout Projects

Project Breakdown (Phase 1)

Work Involved

- Realign Branford Connector and Commercial Parkway
- Relocate CTDOT Commuter Park and Ride
- Construct new signal at realigned Commercial Parkway and Branford Connector
- Construct new connection to Montoya Apartments

Cost = \$5.5 Million

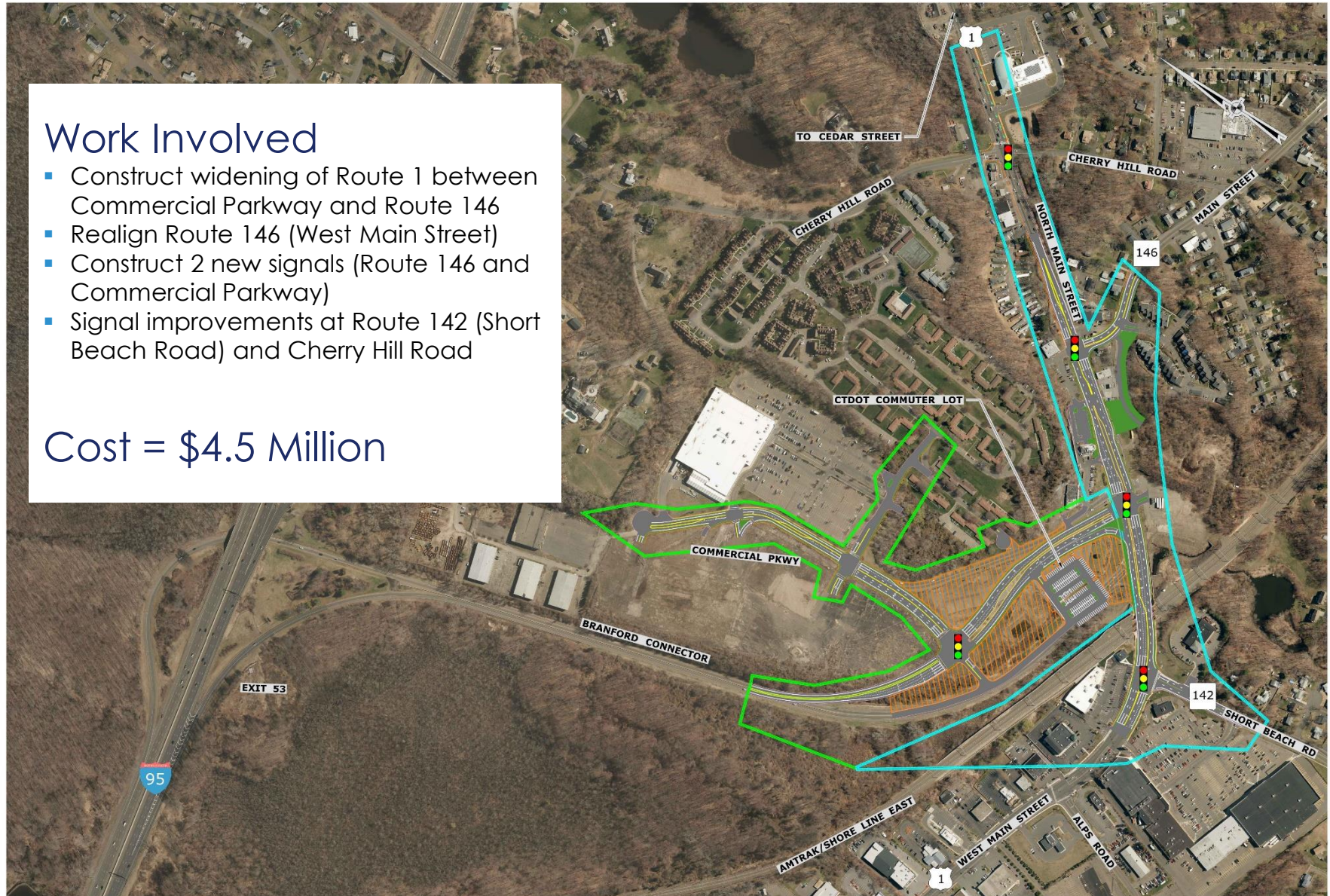


Project Breakdown (Phase 2)

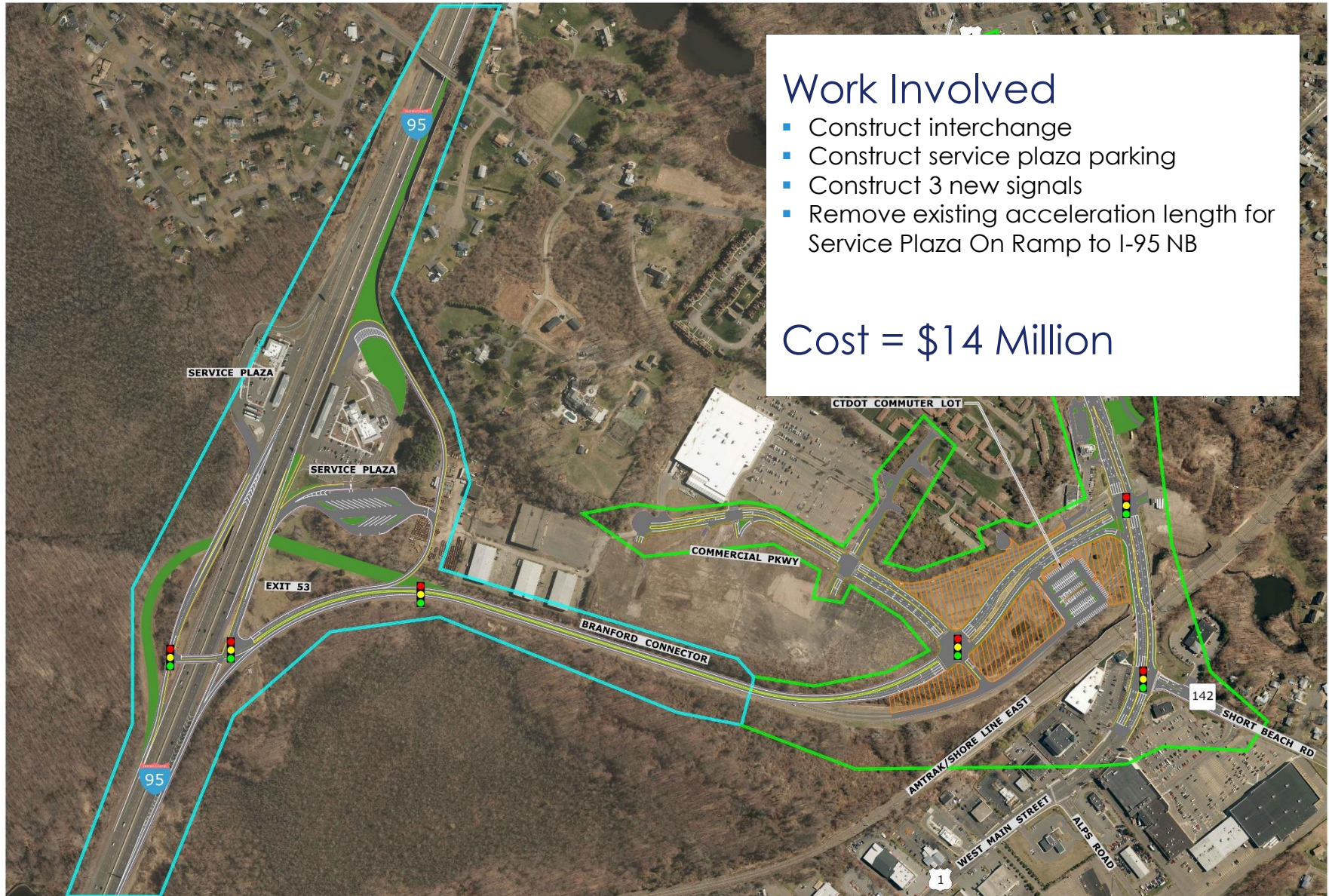
Work Involved

- Construct widening of Route 1 between Commercial Parkway and Route 146
- Realign Route 146 (West Main Street)
- Construct 2 new signals (Route 146 and Commercial Parkway)
- Signal improvements at Route 142 (Short Beach Road) and Cherry Hill Road

Cost = \$4.5 Million



Project Breakdown (Phase 3)



Project Progress – Next Steps

- Finalizing study
 - Incorporating public comments (as applicable)
- Continued coordination with Town, CTDOT, SCRCOG
- Town identification of funding sources

Contact Information

- SCRCOG

Stephen B. Dudley, P.E., L.S.

203-234-7555

sdudley@scrcog.org

www.scrcog.org

- BL Companies

Mike Shepley, P.E.

203-608-2531

mshepley@blcompanies.com



Thank you!

Employee owned. Client driven.

Connecticut | Maryland | Massachusetts | New Jersey | New York | Ohio | Pennsylvania | Rhode Island | Texas

